

2026 PAULO DUARTE FIM ENDUROGP WORLD CHAMPIONSHIP

Paulo Duarte  
GROUP

**enduro**  
**GP**  
FIM WORLD CHAMPIONSHIP



**01**  
**03**  
**MAY**  
**2026**



**GP OF**  
**SPAIN**  
**OLIANA**



**ENDUROGP.COM**



FOLLOW US



# ENVIRONMENTAL SUSTAINABILITY PLAN

Enduro GP Spain  
Oliana 01 - 03 May 2026

## Organizer

Moto Club Oliana

## Index

1. Framework
2. Mobility and Access
3. Organising Committee
4. Biodiversity
5. Course Selection and Design
6. Environmental Protection Measures
7. Biodiversity Protection
8. Management of Hazardous or Contaminated Waste
9. Activities
10. Urban Solid Waste Management
11. Sanitation and Hygiene
12. GP Positions
13. Environmental Guide for the Teams

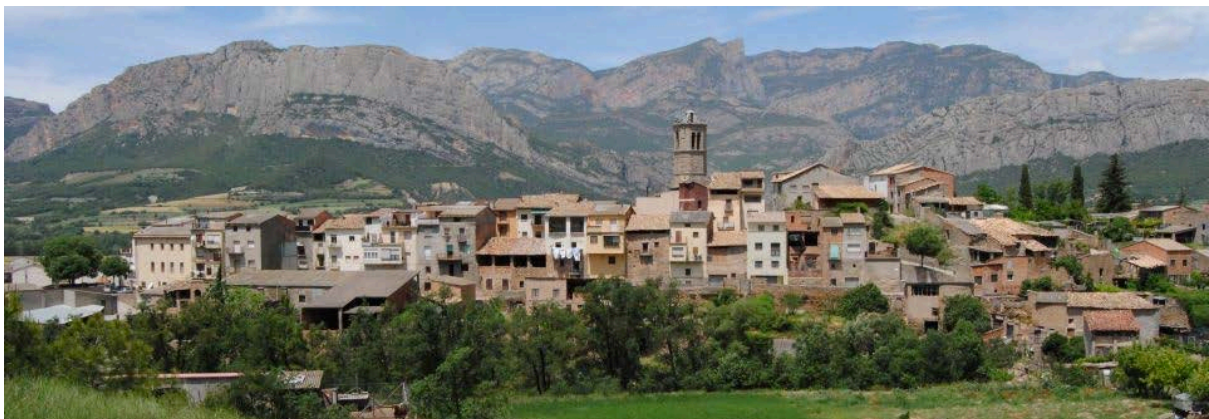
## 1. Framework



## 2. Mobility and Access

Spectators are encouraged to move responsibly between areas. Walking routes may be used where safe and appropriate, but movement is at the discretion and responsibility of each attendee. No internal transport will be provided for spectators.

Here we have placed QR codes, the starting point of reference is always the paddock, you can scan them and use them to go to the different special stages of the race. Like the following:



### Link My Maps

<https://www.google.com/maps/d/edit?mid=1z970kkHATDVjcuqjxis0xc0gzqksF2k&usp=sharing>

### Extrem Test

<https://maps.app.goo.gl/zq7Us9zxPQP6PQeF7>

### Enduro test

<https://maps.app.goo.gl/Z3iP6Ym5Ycg7rghJ9>

### Cross test and Super test

<https://maps.app.goo.gl/Pj55NdaN7jm71M9RA>

## 3. Organising Committee

Organiser	Moto Club Oliana
Address	Oliana
Phone Contact	+34 638036118
E-mail	motocluboliana@gmail.com
Represented by	Eva Pujol Odén
Information	The organizers of this race are made up of people of different ages and backgrounds from a small town. The collaborators who help make this event possible are local people who help out in various areas throughout the weekend. Forty-five percent of the collaborators are women of all ages, and the rest are men of all ages.

## 4. Biodiversity

### Main native plants and trees

- Holm oak and oak groves: These trees are common in the area and are part of the Mediterranean forest.
- Pine groves: Pine groves are also common in the region, especially black pine and Scots pine.
- Mediterranean scrub shrubs: In the drier, sunnier areas, shrubs such as rosemary, thyme, and lavender are found.

### Main mammals

- Wild boar: This is one of the most common mammals in the area, adapted to Mediterranean forests.
- Deer: Deer are also frequently found in our forests.
- Fox: This carnivore is found in the region, adapted to different habitats.
- Bat: Several species of bats inhabit the area.

### Main Birds

- Golden Eagle: This majestic bird of prey inhabits our mountains.
- Griffon Vulture: It is possible to spot griffon vultures flying overhead, especially in the mountainous areas.
- Lark: This bird is common in the fields and meadows of the region.
- Blackbird: The blackbird is a very common bird in our forests.

### Main aquatic animals

- Trout: The rivers and streams in the area are home to trout populations.
- Dragonflies: These aquatic insects are common in areas near rivers and swamps.
- Butterflies: Several species of butterflies can be found in Oliana's natural environments.

### Landscape and natural environment

Oliana's landscape is varied, with mountains, rivers, forests, and fields. The area is located in the Catalan Pre-Pyrenees, so it has a mountainous and rugged topography. Mediterranean forests and cultivated fields are characteristic of the region.

### Rivers, beaches, and marshes

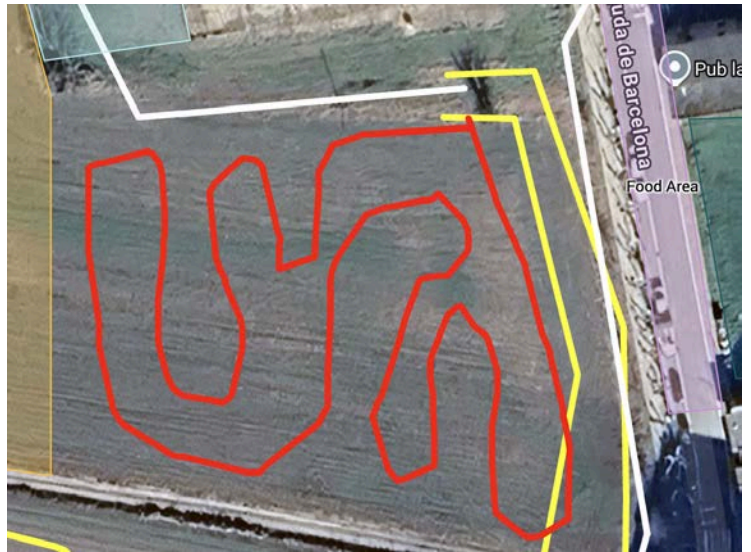
The Segre River is one of the main rivers that flows through the Oliana area. Therefore, the Oliana Reservoir is located in the Solsonès region, a reservoir that offers water activities and is an important habitat for waterfowl.

## 5. Course Selection and Design

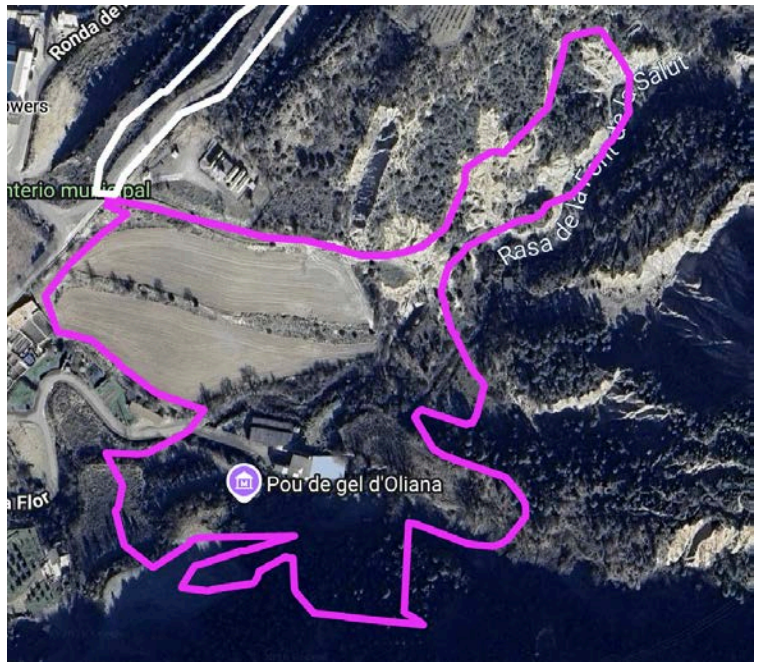
The race course has been carefully designed to avoid the most sensitive areas of Oliana, such as protected areas, habitats for local flora and fauna, and areas of high

ecological value. The routes have been planned to respect existing paths to avoid creating new trails that could harm the natural environment. Furthermore, they have avoided passing near bodies of water or terrain at high risk of erosion.

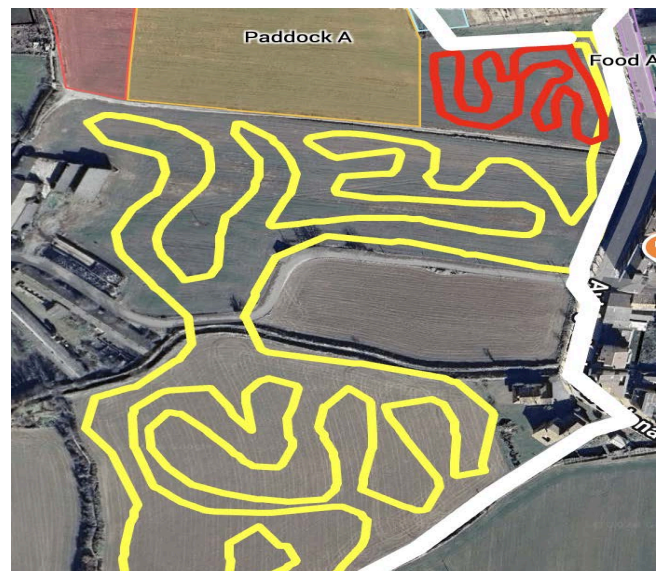
SUPER TEST



EXTREMA TEST



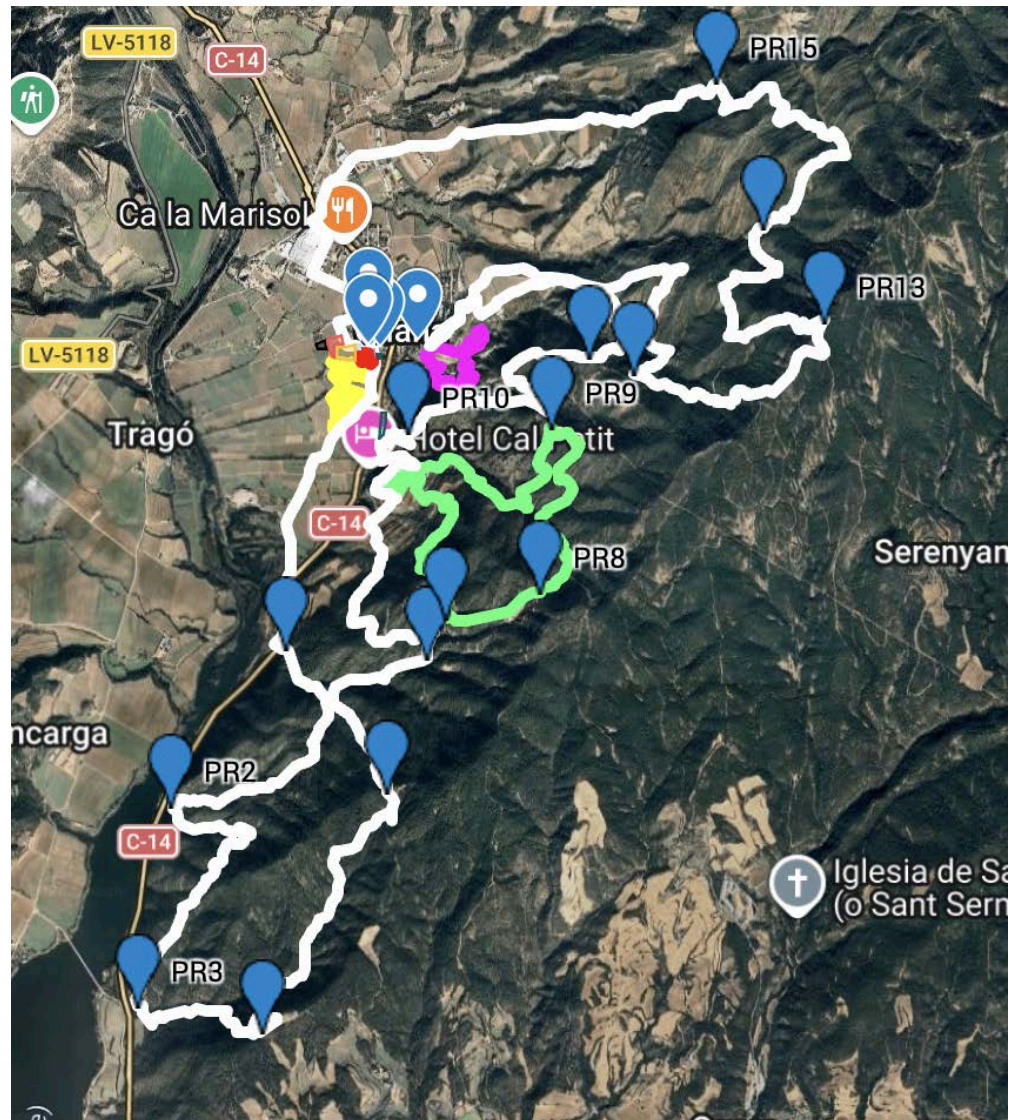
CROSS TEST



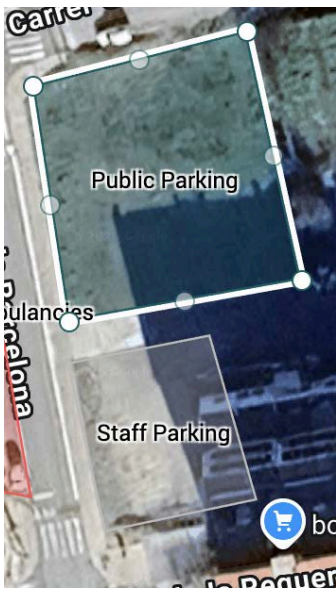
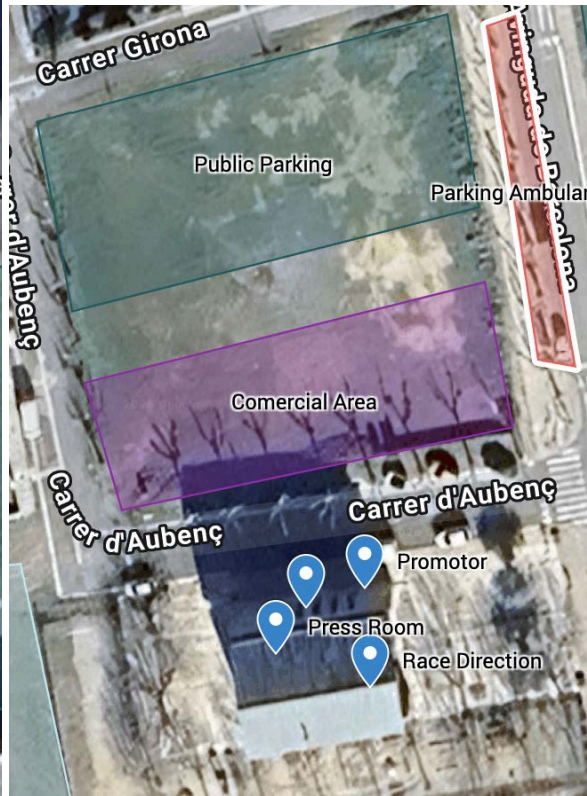
ENDURO TEST

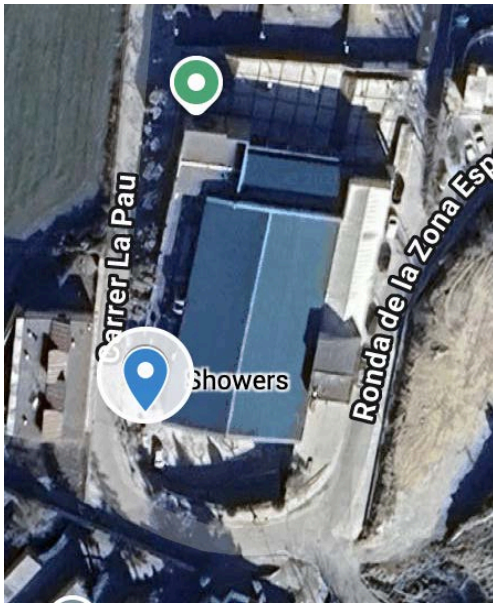


ALL TRACK









## 6. Environmental Protection Measures

### Fire Prevention:

We take an active role in fire prevention by cleaning areas, branches and fallen trees. This work not only protects the forest but also ensures the safety of all event participants.

### Tracks and special tests:

Carefully selected to avoid sensitive areas with a high concentration of fauna and flora, minimizing environmental impact.

### Noise Control Measures:

Implemented to avoid disturbances to local fauna, ensuring a peaceful environment for animals.

#### Environmental Awareness Actions:

We conduct awareness actions with the public and participants, encouraging respect for nature and the adoption of sustainable practices.

## 7. Biodiversity Protection

#### Sustainable Tracks, tests and roads:

Tracks layout designed with the protection of natural parks and sensitive areas in mind, avoiding nesting areas and protected species.

#### Enhanced Fire Prevention:

Extensive cleaning of vegetation areas to reduce the risk of fire.

Intensive awareness of fire prevention among participants and the public, with distribution of information and practical training actions.

Close collaboration with the GNR and other competent entities to ensure fire safety, with well-defined contingency plans.

## 8. Management of Hazardous or Contaminated Waste

In accordance with the FIM Sustainability Code, measures must be taken to prevent spills of fuel, oil, cleaning fluids, degreasers, antifreeze, coolants, brake fluids, etc., from seeping into the ground or evaporating. To this end, the following environmental measures have been implemented to protect soil and water:

#### Proper Disposal of Hazardous Waste:

Firefighters will remove and dispose of hazardous or contaminated waste, such as engine, transmission, and lubricant oils.

## 9. ACTIVITIES

On Wednesday, the WP Eric Augè riders will go to school to give a talk about the world of motorcycling and the possibilities that exist there.

The riders who will go are the following:

- Alex Puey
- Albert Fontova
- Alberto Gonzalez (Mexican)
- Sam Hughes (England)
- Yago Dominguez
- Yago Martinez
- Albin Elowson (Sweden)
- Wiggo Lifvendahl (Sweden)

Friday afternoon before Super test we will enjoy a show by the Geganters i Grallers of Oliana.

During the weekend, the 3rd year secondary school students will sell flashlights for the end-of-year trip. And on the Sunday before the podium, they will draw the winner.

## 10. Urban Solid Waste Management

### Selective Collection:

- Placement of recycling bins (paper, plastic, glass, unsorted waste) in all event areas (paddock, timed stages, public areas, secretariat, control room, etc.).
- Distribution of recycled plastic bags in various colors for teams and the public, encouraging proper waste separation.
- Creation of "ecological islands" in the paddock for the collection of hazardous waste (oils, batteries, tires), with referral to certified entities.
- Delivery of an environmental map with the location of all waste collection points, restrooms, and washing areas.

### Places where the garbage containers are placed:

- <https://maps.app.goo.gl/RdvwGFUjxwkubP4R6>
- <https://maps.app.goo.gl/JLtCwD9XUkxDkFUC8>
- <https://maps.app.goo.gl/Xnw8rnnrHgJA5L4Q7>
- <https://maps.app.goo.gl/fbrGKjKduUTosTTj9>
- <https://maps.app.goo.gl/JWrCKkdzJvV2hRqe9>
- <https://maps.app.goo.gl/Z9Cd9n3xR32PAmNC9>

Place where the showers are placed:

- <https://maps.app.goo.gl/7hENB85YVmu1JsJH6>

Place where polyclines are placed:

- <https://maps.app.goo.gl/YwpmA5RNApnrx4Cw8>
- <https://maps.app.goo.gl/4j5k4qJ6bfhmDVe88>
- <https://maps.app.goo.gl/rAFQHqodhLzid7MC7> (at diferents points in the paddocks)
- <https://maps.app.goo.gl/1uSaYtViWhC6W4TQ6>
- <https://maps.app.goo.gl/bTNmBwaiDxQnrZij8>

To clean your bike:

The motorcycle club does not provide a specific place to clean your bikes during the race. However, we provide two service areas where you can go to clean them.

- Oliana gas station: <https://maps.app.goo.gl/KFQqvL72bb8631Qa6>
- Bassella gas station: <https://maps.app.goo.gl/cGH5vhvM3cT2ozgA7>

To wash your clothes:

There is a laundry a few meters from the paddock where you can go to wash your clothes if you want. You have to pay.

- Laundry: <https://maps.app.goo.gl/Wqk4RtMuiKKtZCvc6>

Cleaning:

- Cleaning actions in all event areas, including timed stages, before, during, and after the event.
- Creation of "eco-brigades" with volunteers and members to ensure the continuous cleaning of the facility.

## 11. Sanitation and Hygiene

The event organizers will provide an adequate number of toilets with good hygiene conditions.

These facilities will be available at the Event Operating Centre, Documentary and Technical

Verifications, Parc Fermé, Podium, Paddock, and in the Start and Finish Zone of the Special Tests.

There will be 20 poly klyns distributed between the paddock, the beginning of the special stages for the runners, for the public, in the commercial area and the food trucks.

There will also be 20 water tanks distributed among the paddocks to empty the grey water.

## 12. GP Positions

Paddock A: 42°03'57.1"N 1°18'36.3"E / <https://maps.app.goo.gl/7UyEhTLuL4jDFhdW8>

Paddock B: 42°03'54.3"N 1°18'37.4"E / <https://maps.app.goo.gl/LApvfHjMurhP5axP6>

Super test: 42°03'55.9"N 1°18'43.4"E / <https://maps.app.goo.gl/nRiEM6hYkSNkLFvZ7>

Cross Test: 42°03'56.5"N 1°18'43.8"E / <https://maps.app.goo.gl/zBLfW5d9FuBPBcFe8>

Enduro Test: 42°03'30.7"N 1°18'48.4"E / <https://maps.app.goo.gl/Ti9gJenr2Acyj1XaA>

Extreme Test: 42.065442, 1.318078 / <https://maps.app.goo.gl/G8JpNUft3Dz2dtLq8>

Training Area: 42°03'52.1"N 1°18'36.7"E / <https://maps.app.goo.gl/8ZVsHbwS6KouCTTq9>

## 13. Environmental Guide for the Teams.

### Environment Guide For Competitors And Teams

- The use of an ecological mat is mandatory in the paddock.
- The use of an ecological mat is mandatory in the Parc Fermé.
- It is essential to prevent spills of fuel, oil, cleaning fluids, degreasers, coolants, and brake fluids from seeping into the ground or evaporating into the air.
- In the paddock, the organizers will have two Eco Islands where competitors and teams can deposit hazardous or contaminated waste, such as used oil, oil filters, contaminated absorbent cloths or fabrics, used tires, used batteries, as well as any other waste not mentioned here.
- All participants are reminded that the use of cleaning products for washing motorcycles is strictly prohibited. Each competitor is responsible for the solid

and liquid waste generated by their team during the event and must always use the recycling bins for responsible sorting of this waste (plastic, metal, cardboard, paper, glass, organic waste, etc.).

- When transporting team members, always prioritize the use of shared vehicles.
- To facilitate the organization of the Oliana EnduroGP, as well as future editions, always follow the instructions of the authorities, organizers, and landowners along the route, so as not to endanger the terrain or the environment.

### Paddock Environmental Management

Grey water tanks will be installed for motorhomes and service trucks. Hazardous waste collection points will be clearly signposted for oils, coolants, filters, tyres and batteries. Refuelling zones will include mandatory absorbent mats.

### Water and Food Management

Drinking water will be available. Food vendors must properly manage waste and dispose of used cooking oils.

### Spill Prevention and Fire Safety

Fire extinguishers will be placed in key areas. Spill kits will be available. Participants must prevent and report any spills.